

Care and Maintenance Q Basic motorhandpiece

chuck: The motorhandpiece is designed for maximum durability. Nevertheless the chuck and the tip should be removed and cleaned from on a regular basis. The chuck should be greased lightly with grease no. 51/1.

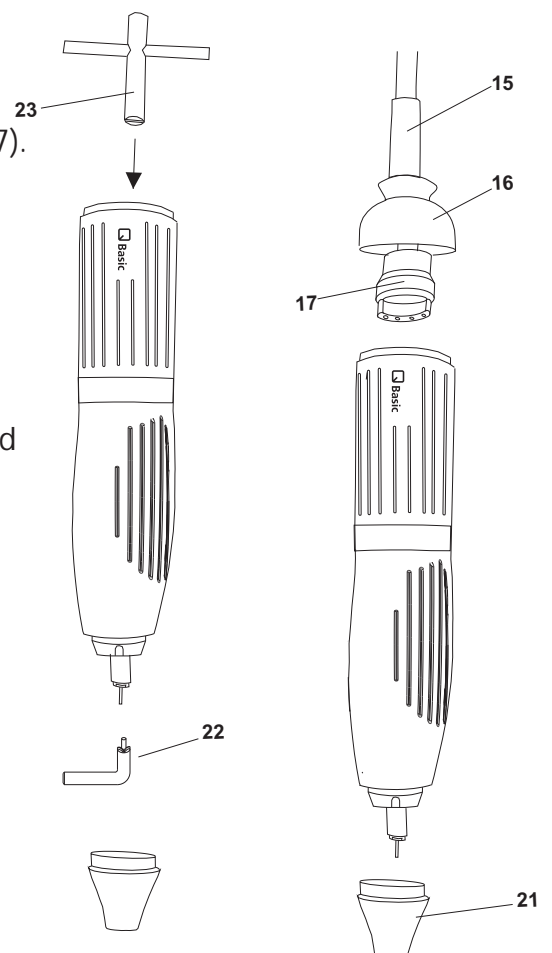


Caution:

- The motorhandpiece is not suitable for moist materials!
- Do not clean the handpiece tip with compressed air!
- Before changing the tool, switch off the handpiece!

Removal of the chuck

- 1 Remove the motor cable (15) by unscrewing the cap (16) from the motor and pull out the plug (17).
- 2 Open the chuck, remove the tool and unscrew the tip (21) of the handpiece.
- 3 Insert the chuck key (22) into the open chuck. Use the counterhold wrench 6223 (23) to hold the motor end of the spindle. Hold the wrench (23) tightly and unscrew the chuck anti-clockwise completely.
- 4 Clean the chuck, grease it lightly from the outside and place it back into the shaft. Use the tools to screw the chuck back in. Make sure the chuck is screwed in completely but do not use any force for tightening. Insert the plug (17) and screw the cap (16) back into place and install the tip (21).



Please note:

- The required chuck keys (22) / (23) are located in the underside of the handpiece rack.
- Always insert a burr or the pin, supplied with the unit, before closing the chuck, to conserve the chuck's precision.

